



SMOKE ALARM K2007 MANUAL

Model no.: 2007

PLEASE READ THE USER GUIDE CAREFULLY BEFORE USE AND RETAIN FOR FUTURE USE!

This smoke alarm is designed for private homes, camping trailers and caravan installations.



EN 14604:2005+AC:2008
DoP no.: 102.0014

The CE and RED declaration of conformity and DoP can be downloaded from: www.kiddesafetyeurope.co.uk
The paper version of the DoP is available free of charge upon request.



The CE mark affixed to the product confirms compliance with all relevant European directives and harmonized requirements in the EN14604 standard and Construction Products Regulation (CPR) 305/2011.

Carrier assumes no responsibility for any errors, which may appear in this manual. Furthermore, Carrier reserves the right to alter the hardware, software, and/or specifications detailed herein at any time without notice, and Carrier does not make any commitment to update the information contained herein. ©2023 Carrier. All Rights Reserved. All trademarks and service marks referred herein are property of their respective owners.

Manufacturer: Carrier Fire & Security Danmark A/S, Ellekær 9A, 2. Th, DK-2730.
Distributed in UK & ROI by Kidde Safety Europe Ltd
Distributed in EU by Carrier B.V.
Manufactured in P.R.C.

SAFETY INSTRUCTIONS:

The device comes with a 3V lithium battery. Batteries are to be handled with care and battery powered devices should be kept out of reach of children. Do not try to recharge or burn the batteries.

TECHNICAL INFORMATION:

Type of alarm: The smoke alarm is a photo electric smoke alarm.

Alarm signal: Fire alarm condition is indicated by a series of repeated tones. The minimum sound level is 85 dB at 3 meters.

Battery: Powered by a non-replaceable 3V CR123 Lithium battery with 10-year life (included).

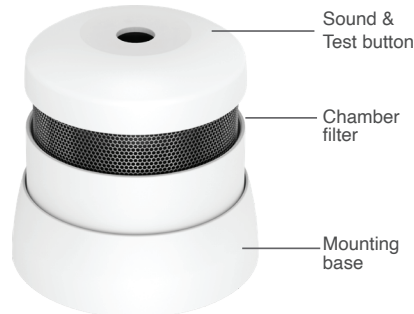
IMPORTANT: Do not replace the battery. Replace the product if the battery fails.

Diameter: 40mm Height: 41mm.

Low battery indicator: A short "beep" will sound and LED flash every 48 seconds when the battery is near the end of life. In this stage it will continue for a minimum 30 days. It is recommended to change the smoke alarm after 10 years, or if the alarm has suffered any damage. The alarm is not active unless it is inserted in the mounting base. Always check the alarm after inserting in the mounting base (allow a few seconds before testing).

Placement: The smoke alarm is designed for placement on a ceiling or wall. The smoke alarm should be a minimum of 50 cm from the wall, with a minimum of one smoke alarm per floor and a maximum distance between smoke alarms of 10 meters.

Alarm signal: The alarm has a visual and acoustic alert tone. In the passive state, the LED will flash every 48 seconds to indicate normal function. In an alarming state the LED will flash and the alarm will emit a sweeping sound pattern design to alert occupants.



Hush function: In case of unintentional alarm condition or false alarms, press the top button.

This will hush the alarm for 10 minutes, after which time it will automatically resume its normal alarm function.

Maintenance: The smoke alarm should be vacuum cleaned once per quarter, and it can be wiped with a damp cloth. (Do not open the alarm).

Test the alarm at least once per quarter by pushing the test button. The alarm will self test and give a loud alarm tone.

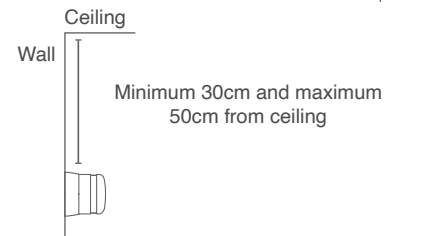
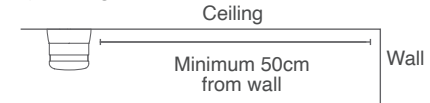
The best places to mount the alarm:

- Place an alarm between possible fire sources and bedrooms as minimum.
- Alarms on each floor and in hallways and stairways.
- Alarms in each room such as bed rooms and livingrooms.

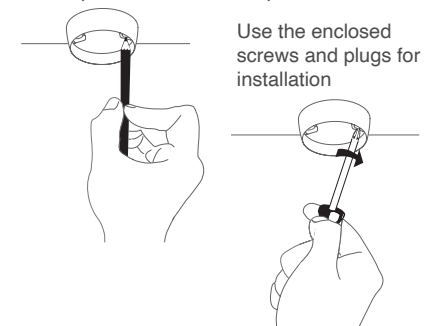
Additional alarms increase the security.

Installation of alarm:

1. Detach the alarm from the mounting base by twisting counter clockwise. Use the mounting base to mark the screw holes on the ceiling. Use the enclosed screws and plugs to install the mounting base. Once the mounting base is installed on ceiling or wall, attach the alarm by twisting clockwise.



Mark up screw holes with a pen



2. After mounting, test the alarm by pushing the test button on the top and get a loud alarm tone.

Please note: The label in the product must not be removed as it contains important information regarding the product.

The alarm may NOT be placed:

- In dusty rooms.
- At the top of high pointed ceilings, in ceiling corners or within 50 cm of a wall.
- In rooms where the temperature goes outside +4°C to 38°C or above 90% relative humidity not condensing.
- In kitchen, garage and fireplaces where damp, gases and smoke could occur. Place the alarm where it is reachable in order to test the battery and for maintenance.

Fault finding: If the smoke alarm activates without visible cause, the possible cause could be:

- Dust particles in the smoke chamber which can be removed by vacuuming the mesh.
- High humidity condensing which can be resolved by drying the smoke alarm.

If the smoke alarm does not work when the test button is pushed, the probable cause is a faulty battery and the smoke alarm must be replaced.

Other information: Do not paint the alarm.

Disposal: For product, please dispose properly at the end of life. This is electronic waste which should be recycled.

Please note local regulations about information to your insurance company regarding installed smoke alarms.

WARNING: All alarms should be assumed as due to actual fire and the dwelling should be evacuated immediately.

WARNING: To prevent injury, this apparatus must be permanently fixed to the ceiling/wall in accordance with the installation instructions.

WARNING: Batteries shall not be exposed to excessive heat such as direct sunshine, fire, or the like. Note the local country regulations regarding installation.

Product Support:
Kidde Safety Europe Ltd, Ash House, Littleton Road, Ashord, TW15 1TZ, UK
www.kiddesafetyeurope.co.uk
admin.kiddesafety@carrier.com
0800 917 0722